

National School Lunch Program Participation Tracker

Background/Rational

Beginning in the 2012-13 school year new meal pattern requirements were implemented for the National School Lunch Program (along with other regulations from the Healthy Hunger-Free Kids Act). SNA is tracking participation levels for the National School Lunch Program in order to understand national participation trends. Using data from USDA, SNA is specifically interested in comparing the participation rates beginning in the 2011-12 school year to date. SNA will provide periodic updates on participation trends as USDA data reports are made available to the public.

Summary of Findings

September - November Comparison

Average Daily Participation of Students

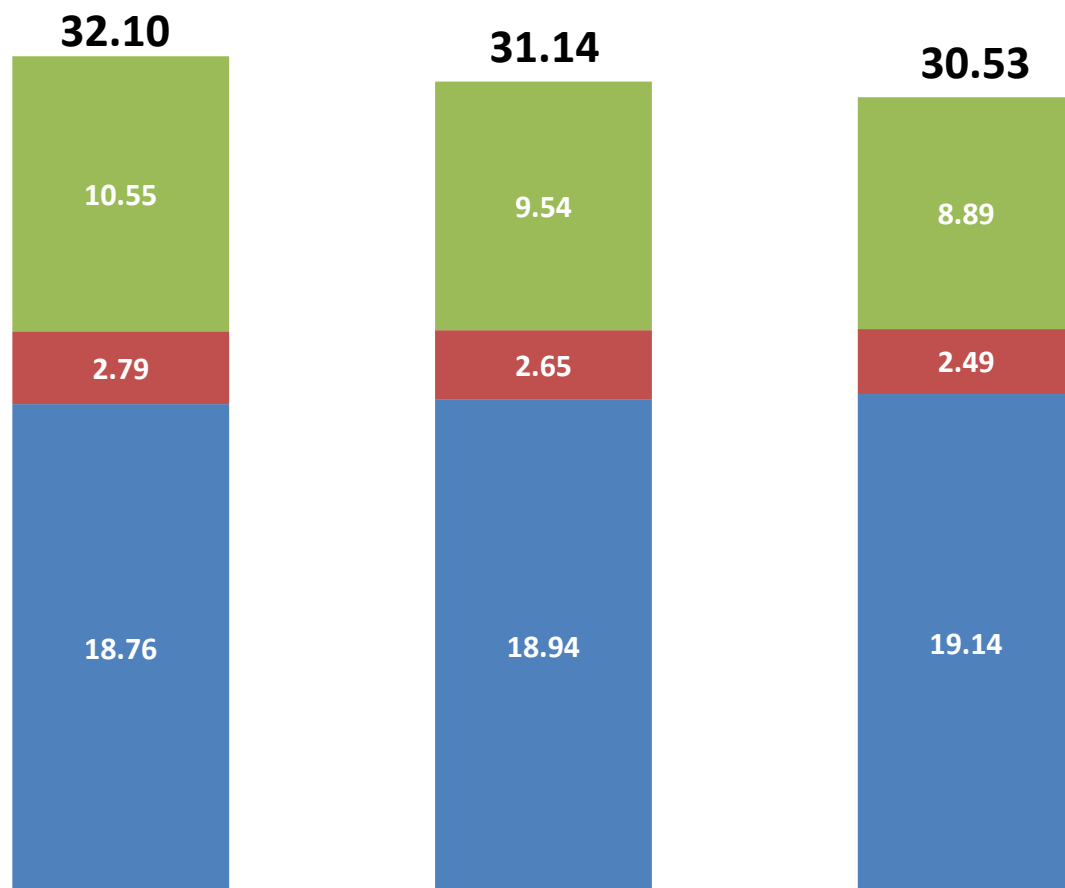
- Based on the data included in USDA's January 2014 and 2012 FNS Key Program Data Reports, 30.5 million students participated in the National School Lunch Program on an average day, so far, in the 2013-14 school year (September – November 2013). This is a 1.94% decrease in the average number of students participating when compared to the same time frame last school year and a 4.89% decrease when compared to the same time frame in school year 2011-12. Increases in average student participation in the free category are not large enough to overcome decreases in average paid and reduced-price student participation.



National School Lunch Program

Average Student Participation September - November

Average Student Participation Per Day (in millions)



Participation Changes Over Time

Overall
 1.94% decrease since SY 2012-13
 4.89% decrease since SY 2011-12

Paid
 6.79% decrease since SY 2012-13
 15.70% decrease since SY 2011-12

Reduced-Price
 5.91% decrease since SY 2012-13
 10.68% decrease since SY 2011-12

Free
 1.05% increase since SY 2012-13
 2.05% increase since SY 2011-12

SY 2011-12
Sept- Nov 2011

SY 2012-13
Sept- Nov 2012

SY 2013-14
Sept-Nov 2013

■ Free ■ Reduced ■ Paid



Data Source: USDA FNS Key Program Data Report, January 2014 & USDA FNS Key Program Data Report, November 2012

1. Totals are averaged. Computations are based on monthly data from September-November 2011, 2012 and 2013.

National School Lunch Program

	SY 2011-12 Sept - May	SY 2012-13 Sept - May	SY 2013-14 Sept – Nov
NSLP Average Student Participation per Day (in millions)			
OVERALL	31.7	30.7	30.5
Paid	10.3	9.2	8.9
Reduced-Price	2.7	2.6	2.5
Free	18.7	18.9	19.1

Data Source: USDA FNS Key Program Data Report, January 2014 & USDA FNS Key Program Data Report, November 2012

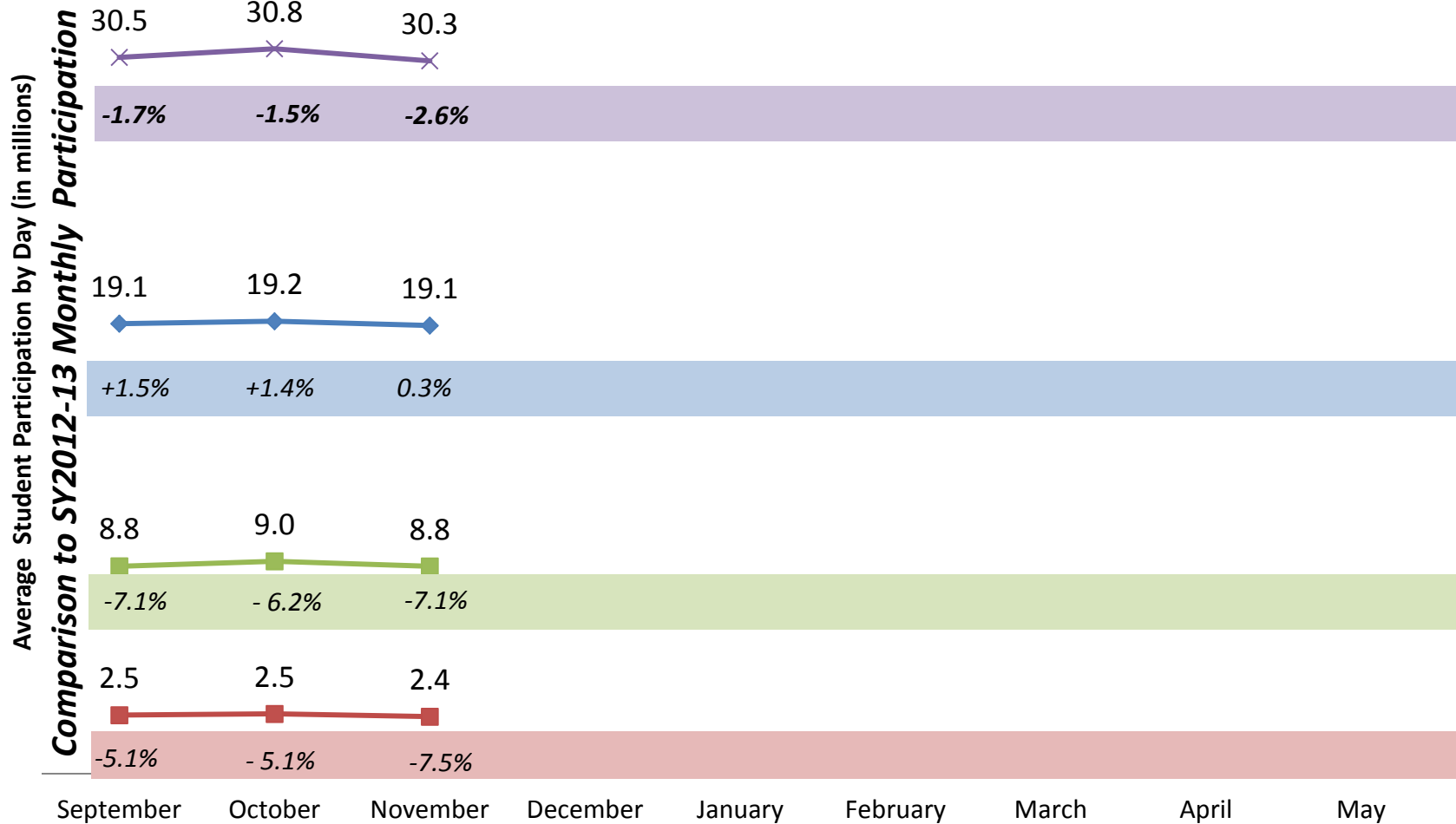
1. Totals are averaged. Computations are based on monthly data.
2. School year is a 9-month average September through May



National School Lunch Program

Monthly Participation 2013-14

◆ Free ■ Reduced ■ Paid ✕ TOTAL



Data Source: USDA FNS Key Program Data Report, January 2014 & USDA FNS Key Program Data Report, November 2012

1. Totals are averaged. Computations are based on monthly data from September-November 2011, 2012 and 2013.



School Breakfast Program Participation Tracker

Background/Rational

Beginning in the 2013-14 school year new meal pattern requirements are being implemented for the School Breakfast Program. SNA is tracking national participation levels for the School Breakfast Program in order to understand national participation trends. Using data from USDA, SNA is specifically interested in comparing the participation rates beginning in the 2011-12 school year to date. SNA will provide periodic updates on participation trends as USDA data reports are made available to the public.

Summary of Findings

September Comparison

Average Daily Participation of Students

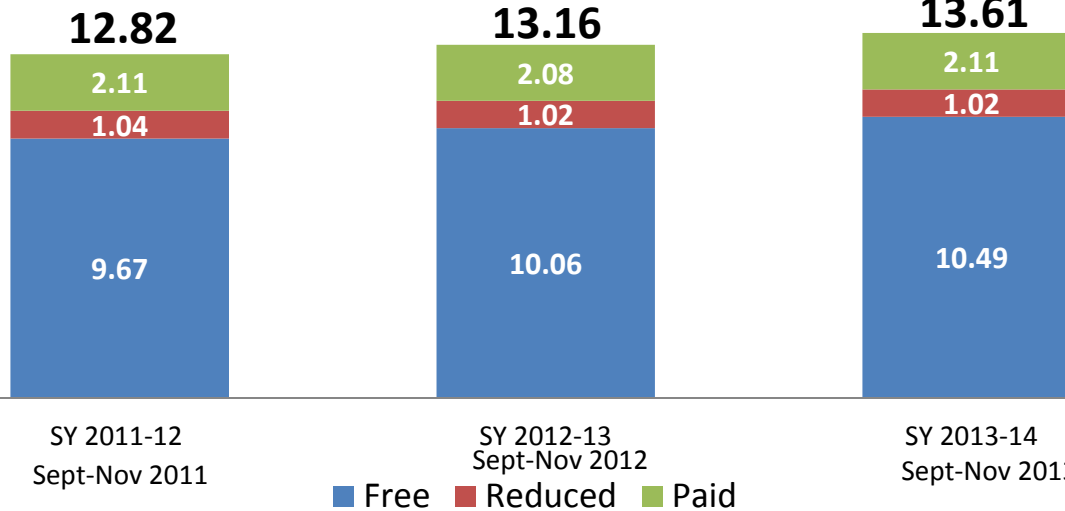
- Based on the data included in USDA's January 2014 and 2012 FNS Key Program Data Reports, 13.6 million students participated in the School Breakfast Program on an average day, so far, in the 2013-14 school year (September – November 2013). This is a 3.38% increase in the average number of students participating when compared to the same time frame last school year and a 6.19% increase when compared to the same time frame in the 2011-12 school year.
- There was a 4.24% increase in the average number of students participating within the free category and a 1.05% increase in the paid category compared to the same time frame last school year.



School Breakfast Program

Average Student Participation September - November

Average Student Participation Per Day (in millions)



Participation Changes

Overall

3.38% increase since SY 2012-13
6.19% increase since SY 2011-12

Paid

1.05% increase since SY 2012-13
0.02% decrease since SY 2011-12

Reduced-Price

0.29% decrease since SY 2012-13
1.78% decrease since SY 2011-12

Free

4.24% increase since SY 2012-13
8.40% increase since SY 2011-12

Data Source: USDA FNS Key Program Data Report, January 2014 & USDA FNS Key Program Data Report, November 2012

1. Totals are averaged. Computations are based on monthly data from September-November 2011, 2012 and 2013.



School Breakfast Program

	SY 2011-12 Sept - May	SY 2012-13 Sept - May	SY 2013-14 Sept – Nov
SBP Average Student Participation per Day (in millions)			
OVERALL	12.8	13.1	13.6
Paid	2.1	2.0	2.1
Reduced-Price	1.0	1.0	1.0
Free	9.7	10.1	10.5

Data Source: USDA FNS Key Program Data Report, January 2014 & USDA FNS Key Program Data Report, November 2012

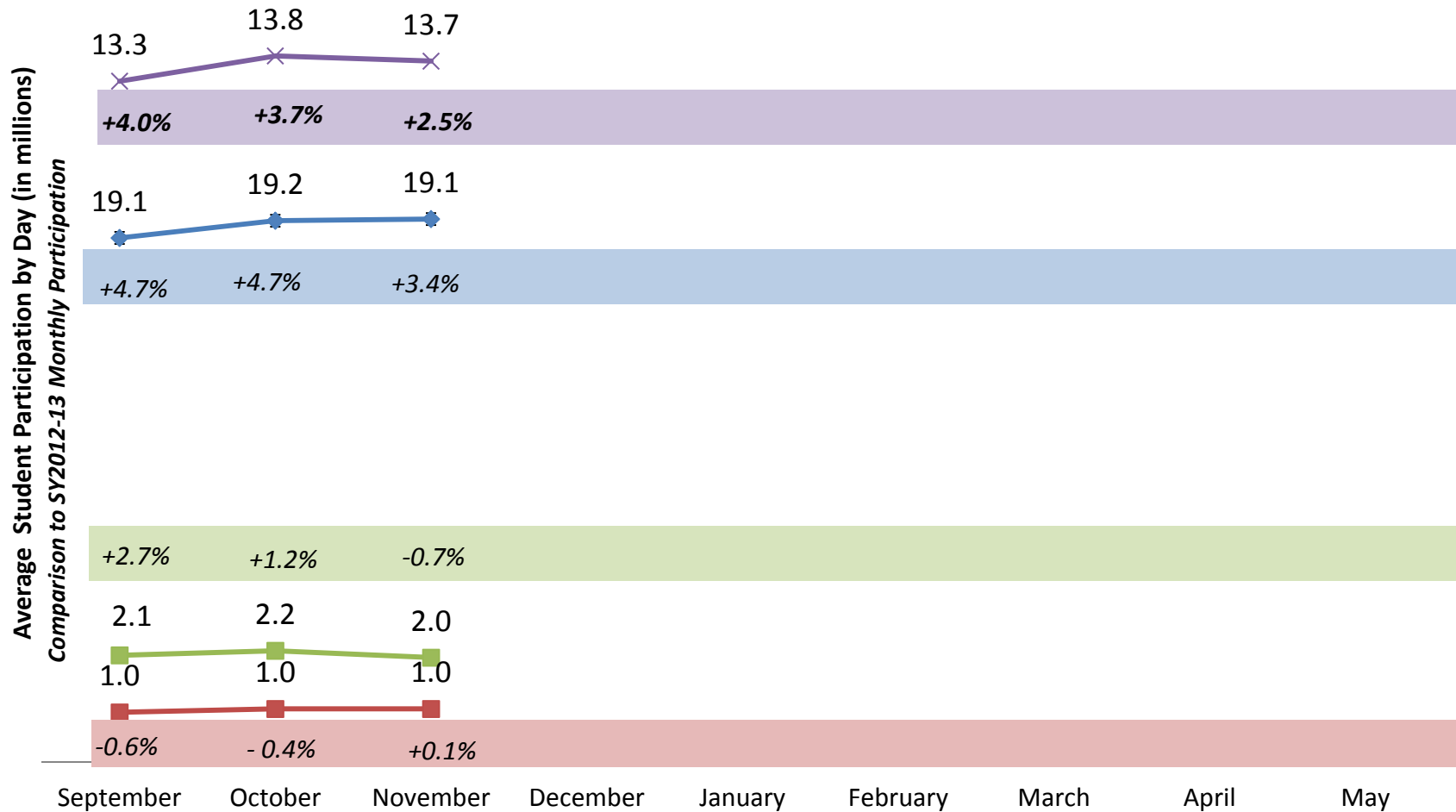
1. Totals are averaged. Computations are based on monthly data.
2. School year is a 9-month average September through May



School Breakfast Program

Monthly Participation 2013-14

◆ Free ■ Reduced ■ Paid ✕ TOTAL



Data Source: USDA FNS Key Program Data Report, January 2014 & USDA FNS Key Program Data Report, November 2012

1. Totals are averaged. Computations are based on monthly data from September-November 2011, 2012 and 2013.